

## TAKE BACK CONTROL OVER UNDERSTANDING YOUR MS.

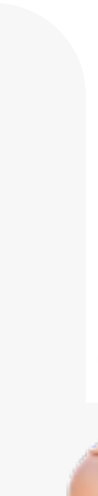
Have you ever felt as though you couldn't find information about your multiple sclerosis (MS) diagnosis and treatment that was specific to your unique situation, location, or culture?

Chances are this is because **you are not being represented in research.**

We know that MS may affect racial, ethnic, and social minority groups differently, particularly due to factors related to environment and lifestyle.

However, minority groups still make up less than 8% of participants in most MS research studies.

When minority group members are excluded from research, it is impossible to understand how they're affected by their MS and determine their best treatment options.



Jaqueline De Regla  
iConquerMS and  
RIDE Council Member

## COME JOIN OUR NETWORK!

iConquerMS is supported by the Accelerated Cure Project, a patient-founded non-profit organization dedicated to accelerating MS research.

1 - 844 - 897 - 1211  
info@iConquerMS.org  
www.iConquerMS.org



**Diverse research participation is the key to a better future for people living with MS**

Join our network to find out how you can contribute to making multiple sclerosis research more inclusive!

This brochure was created in collaboration with the iConquerMS Research Inclusion, Diversity, and Equity (RIDE) Council





## PATIENT-DRIVEN AND ONLINE

iConquerMS is an online community of people with MS that conducts accessible research on the topics that network members prioritize. Your participation can be as easy as filling out an occasional survey or as involved as joining a committee focused on your interests. Visit us online to learn more!

**Participating in research is critical to making sure you are considered and your voice is heard!**

Robert Sarles  
iConquerMS and  
RIDE Council Member



Teresa Wright-Johnson  
iConquerMS and  
RIDE Council Member



## WHY IS THERE SO LITTLE DIVERSITY IN MS RESEARCH?

A survey of 2,600 people with MS conducted in 2017 found that factors such as lack of awareness of study opportunities, concerns about legal and health risks, and unclear study information were barriers to research participation for minority community members.\*

However, most people were also willing to participate in research, given the opportunity.

At iConquerMS, we're addressing research diversity through focused diversity initiatives such as the RIDE Council.

\*Pimentel Maldonado, Int J MS Care, 2021

## THE RESEARCH INCLUSION, DIVERSITY, and EQUITY (RIDE) COUNCIL

an iConquerMS initiative

- The RIDE Council is a group of people with MS focused on broadening participation in research by highlighting the voices and experiences of people from traditionally underrepresented communities.
- RIDE includes sub-councils focused on specific underrepresented groups including Hispanic/Latinx, Black/African American, Asian American, rural, LGBTQ+, veteran, and disabled people.
- To learn more, visit us online at [iConquerMS.org/ride-council](https://iConquerMS.org/ride-council) or by scanning the QR code below.

